

# MAGNEMOUNT

---

A DIVISION OF SCHMIDT INDUSTRIAL SERVICES

# Overview

Magnemount is the proven, non-destructive mounting solution for communication equipment on elevated structures—trusted by industry leaders for more than 20 years.

Magnemount is powered by Schmidt Industrial Services LLC, a market-leading metal fabrication, precision machining, and industrial solutions company headquartered in Chester, PA.

Schmidt Industrial Services abides by the highest quality fabrication standards as guided by ASME.

## OUR LOCATION

📍 418 W Front Street, Chester PA, 19013

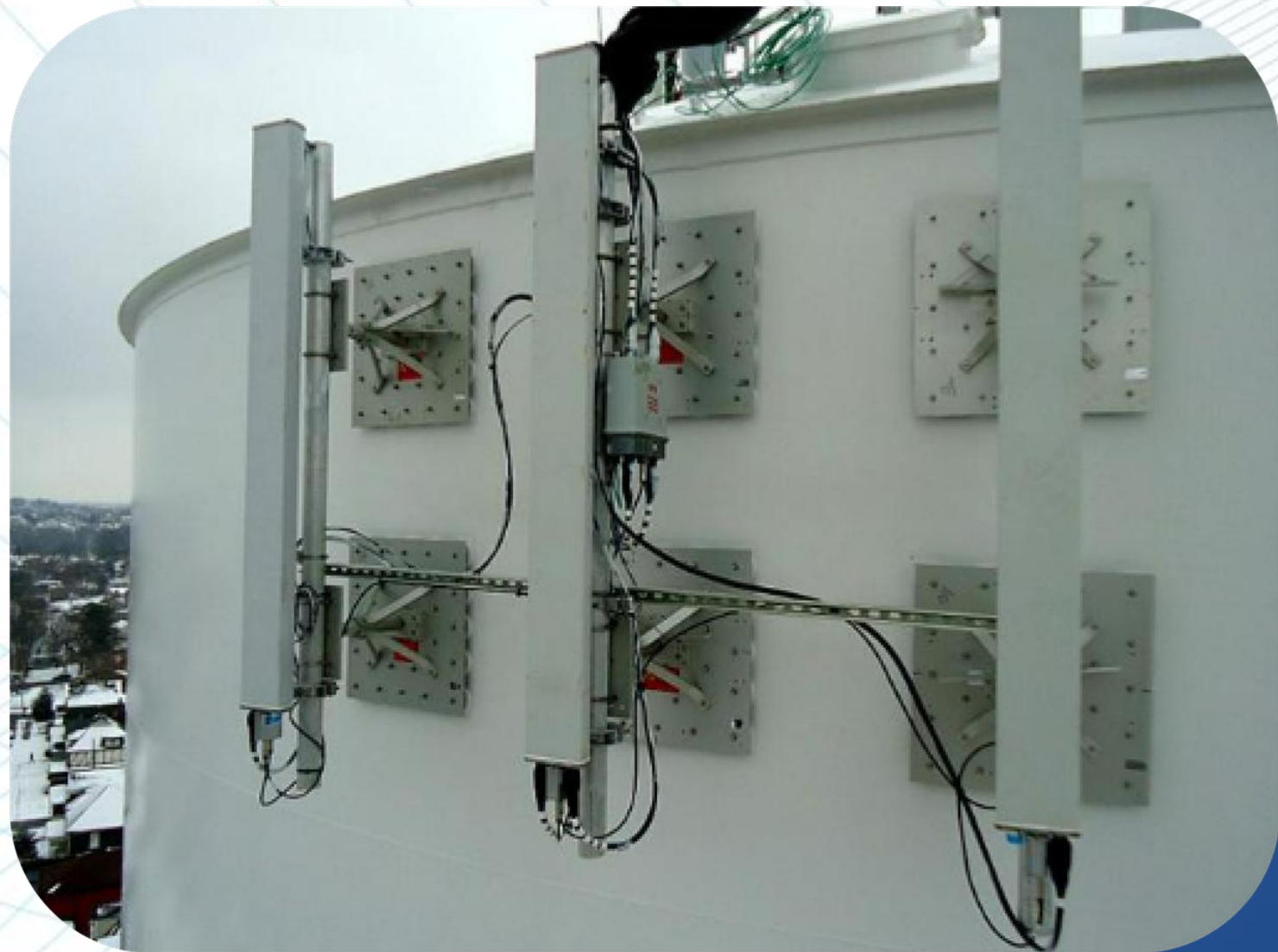


# MAGNEMOUNT

# The Challenge

Mounting on Elevated Structures Shouldn't Mean:

Traditional Mounting methods – drilling, welding, clamping – compromise structural integrity, void warranties, and create costly rework when equipment needs to be repositioned or removed.



## STRUCTURAL DAMAGE

Drilling and welding leave permanent marks and weaken steel surfaces



## COSTLY REWORK

Repositioning equipment demands expansive repairs and downtime



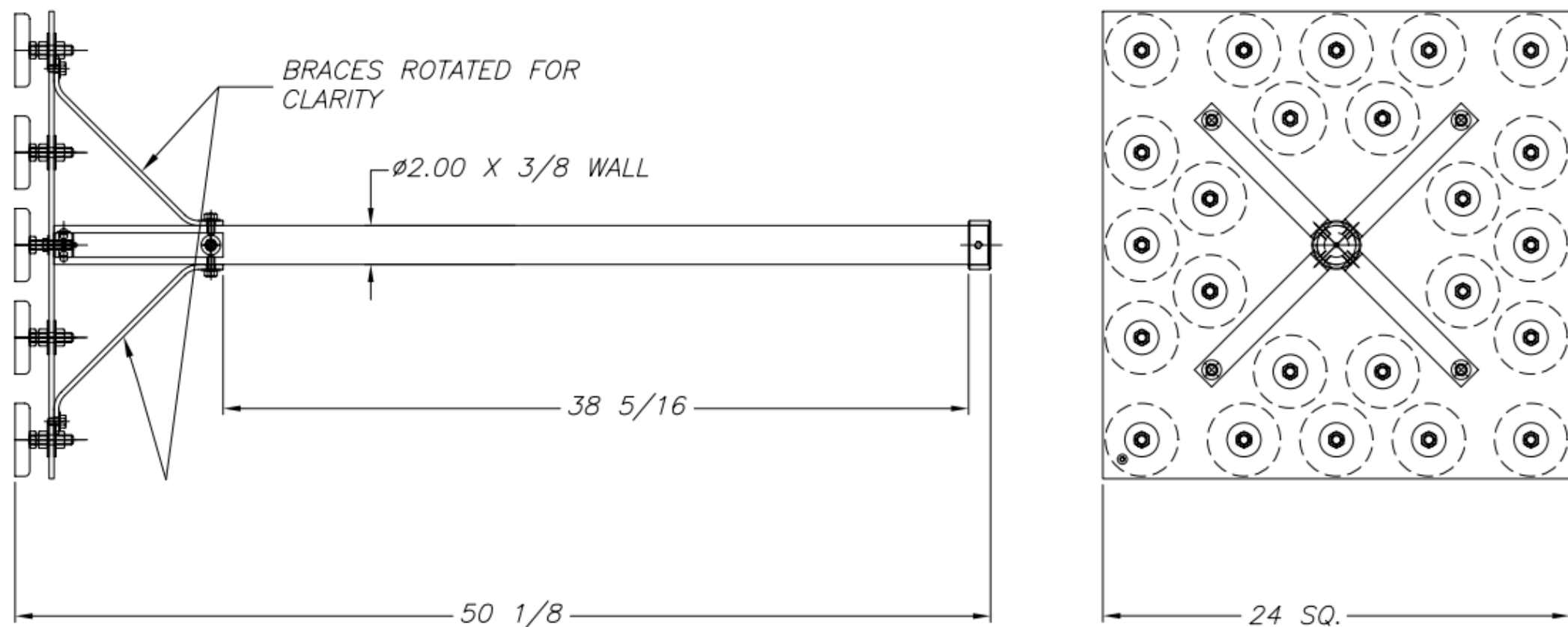
## COMPLIANCE RISK

Invasive methods can violate site lease terms and structural specifications

# MAGNEMOUNT

# Introducing Magnemount

A custom-engineered magnetic mounting system designed specifically for the communications industry – delivering unmatched holding strength without a single hole drilled.



**Non-Destructive:** Zero Damage to tower surfaces or substrates.

**Custom-Engineered:** Tailored to your equipment specifications.

**Field-Proven:** 20+ years of deployment across the U.S.

**MAGNEMOUNT**

# Core Advantages



**Surface Preservation:** Magnemount leaves tower surfaces completely intact. No drilling, no welding, no corrosion points – protecting your asset and satisfying lease agreements.



**Exceptional Durability:** Built around high-strength magnets, Magnemount withstands extreme weather, vibration, and load forces that challenge conventional hardware.



**Fast, Flexible Installation:** Technicians can mount, reposition, and remove equipment without specialized tools or structural repairs—cutting field time and labor costs significantly.

## MAGNEMOUNT

# Track Record

20+ YEARS OF PROVEN PERFORMANCE

20+

0

100%

## Years in Market

A segment leader since the early 2000s

## Surface Violations

Zero structural damage incidents on record.

## Custom-Built

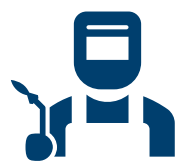
Every unit engineered to order, quality inspected, and made in USA.

Magnemount has been specified and deployed by communications companies across the United States, supporting everything from initial site build-outs to equipment upgrades and technology refreshes

# The Company Behind Magnemount

## SCHMIDT INDUSTRIAL SERVICES

Magnemount is part of Schmidt Industrial Services– a recognized leader across four core disciplines, bringing expanded engineering depth, manufacturing precision, and field execution capability to every Magnemount order.



**Metal Fabrication**



**Field Services**



**Assembly**



**Precision Machining**



**MAGNEMOUNT**



# Let's Build the Right Solution Together

Whether you're planning a new tower buildout, upgrading existing infrastructure, or looking to reduce site damage risk across your portfolio – Magnemount has a proven, engineered solution ready for your team.

---

**Website:** [www.metal-cable.com](http://www.metal-cable.com)

**Sales:** [magnemount@wasinc.com](mailto:magnemount@wasinc.com)

**Phone:** 610-874-8436

**Address:** 418 W Front Street, Chester, PA 19013

## MAGNEMOUNT